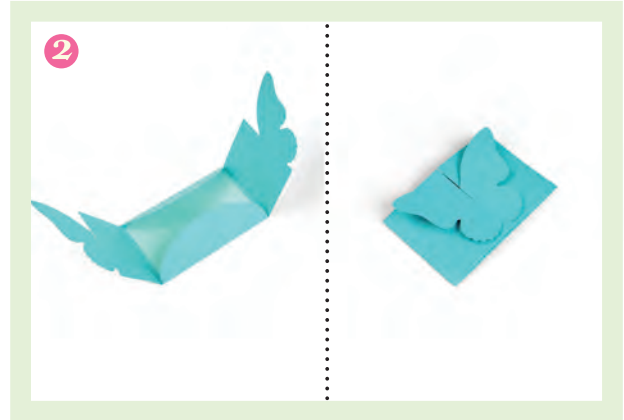


# 659249 Sizzix® Bigz™ XL Die - Butterfly Card by Brenda Walton™



1. Die-cut from desired material and apply adhesive to the front side of the wings.



2. Fold top and bottom flaps. Interlock wing tabs.



3. Adhere shapes to each wing tab.



4. Note: The folded edges of the wing shapes line up with each other. There is nothing overlapping the center area of the Card.



5. Open and close Card by holding the wing tabs and sliding them apart.



6. Embellish as desired.